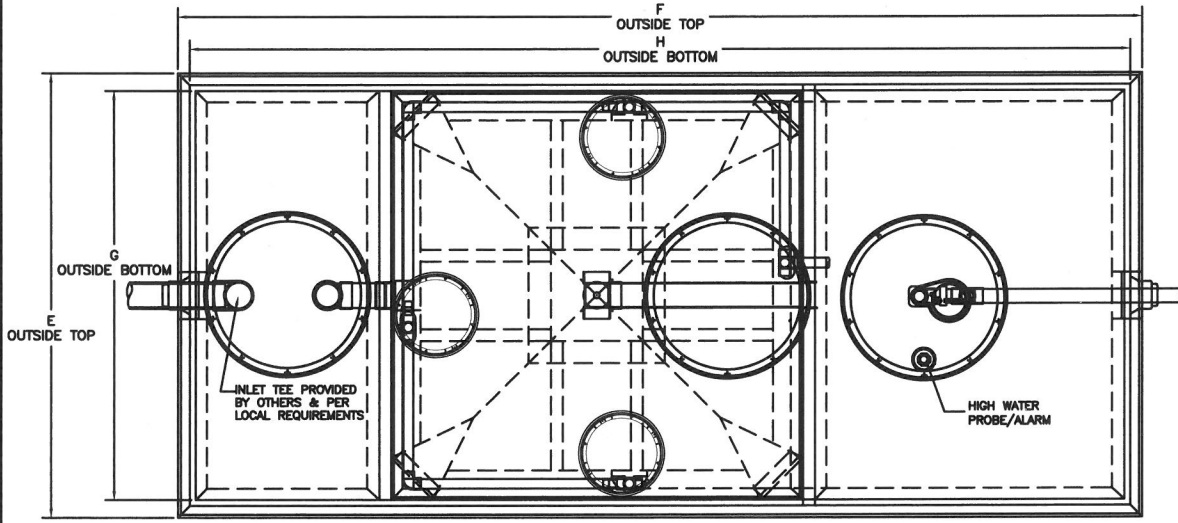


CRITICAL DIMENSIONS	
A	69.00"
B	57.00"
C	52.00"
D	4.00"
E	75.50"
F	161.00"
G	66.50"
H	152.00"
J	48.50"
K	15.00"
L	24.50"
M	12.50"

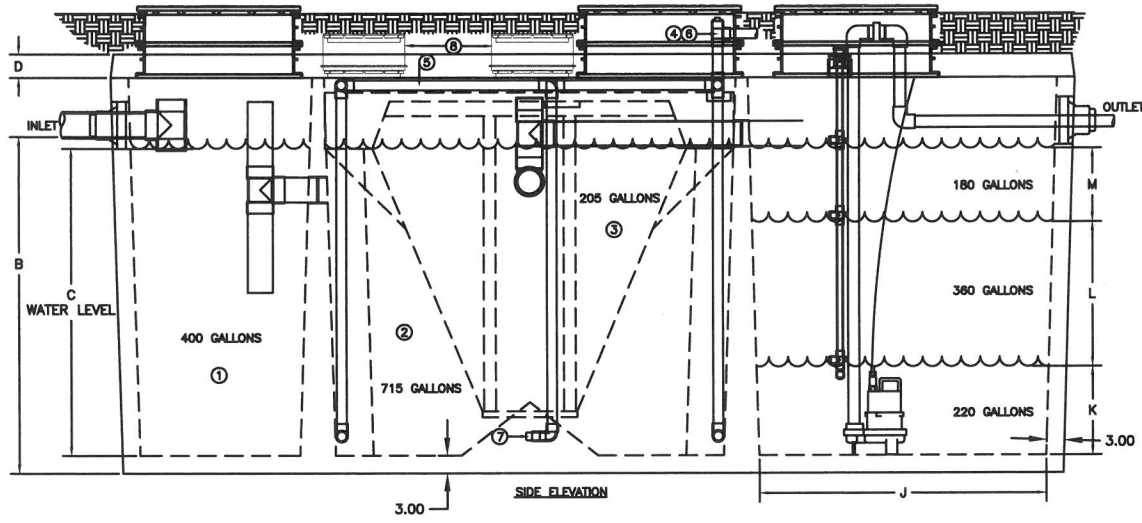
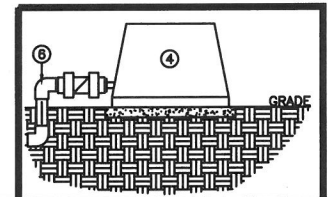


PLAN VIEW

**THE H-SERIES HOOT AEROBIC TREATMENT SYSTEM**

- 1) PRETREATMENT TANK-- WHERE ANAEROBIC DIGESTION OCCURS AND STORAGE FOR NON-BIODEGRADABLE MATERIALS.
- 2) AERATION CHAMBER-- WHERE AIR IS INTRODUCED INTO SEWAGE FOR DIGESTION.
- 3) CLARIFIER-- A STILL CHAMBER WHERE SOLIDS SETTLE OUT AND THE CLEAR EFFLUENT RISES.
- 4) TROY AIR LINEAR AIR BLOWER-- LONG LIFE, EFFICIENT LINEAR BLOWER WHICH COMPRESSED ATMOSPHERIC AIR AND UNDER PRESSURE DELIVERS IT TO THE TANK. MAY BE REMOTELY MOUNTED UP TO 50' FROM SYSTEM. MUST MAINTAIN 1/8" SLOPE TOWARDS TANK FOR DRAINAGE.
- 5) AIR MANIFOLD-- DELIVERS THE AIR FROM THE LINE TO THE STONES FOR DIFFUSION INTO THE SEWAGE.
- 6) AERATION LINE-- DELIVERS THE AIR FROM THE PUMP TO THE MANIFOLD. CHECK VALVE INCLUDED.
- 7) AERATION STONE-- AIR IS FINELY DIFFUSED FROM THE STONE INTO THE AERATION CHAMBER.
- 8) 12" COVERS-- PROVIDE ASSEMBLY ACCESS INSIDE OF SYSTEM. (NOT USED FOR REGULAR SERVICE OR BROUGHT TO GRADE)

**TROY AIR BLOWER**



SIDE ELEVATION

**HOOT SYSTEMS, LLC**  
www.hootsystems.com

THIS DRAWING IS THE PROPRIETARY PROPERTY OF HOOT SYSTEMS LLC. REPRODUCTION, DISCLOSURE OR USE OF ANY PART OF THIS DRAWING OR ANY INFORMATION THEREIN IS EXPRESSLY PROHIBITED WITHOUT PRIOR WRITTEN CONSENT OF HOOT SYSTEMS LLC.

<b>DESCRIPTION:</b> 600 GPD PUMP DISCHARGE SYSTEM 3" WALL HOOT SYSTEMS H-600A w/ 760 GAL. P.T.				<b>PART #</b>  H-600A-760
<b>DATE:</b> 06-19-2014	<b>DRAWN BY:</b> AY	<b>CHECK BY:</b> RS	<b>SCALE:</b> N.T.S.	