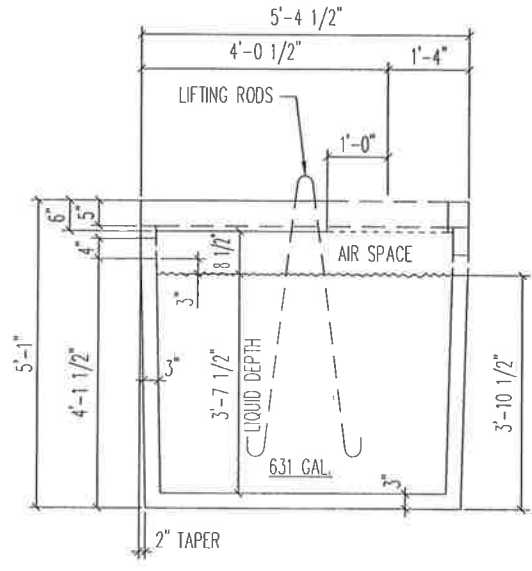


**625 GALLON TANK**  
 1/2" = 1'-0"



**SECTION**  
 1/2" = 1'-0"

**NOTE:**  
 1. PROVIDE MINIMUM 1" CLEAR BETWEEN TOP OF BAFFLE AND UNDERSIDE OF LID.

625 GALLON PUMP TANK  
 (625 PT)



WEIGHT=6280#  
 MAX. SOIL COVER= 7'-0"